



sage

by freelance.com

- **A leading payroll engineering company
serving the expatriate community**

EXPATRIATION MANAGEMENT SUPPORT SERVICE

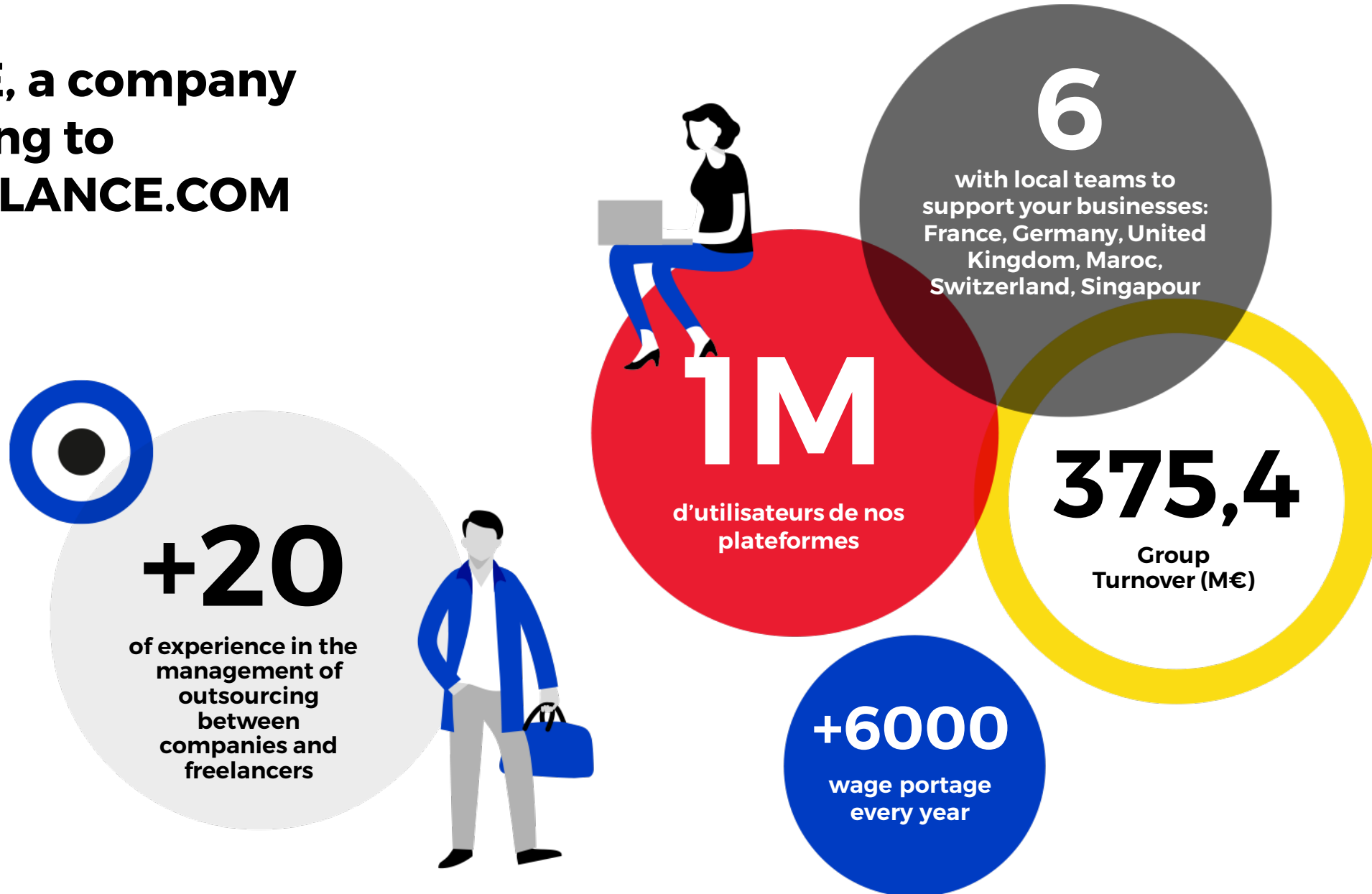


WHO ?

sage

by freelance.com

SAGE, a company beyong to FREELANCE.COM





OUR MISSION

Is to provides **Employment Outsourcing Services**, to Client companies with Staff and Activities Worldwide.



International experts
management



Social costs
saving & optimisation



Flexible recruitment on fixed-
term contracts



INTERNATIONAL UMBRELLA COMPANY

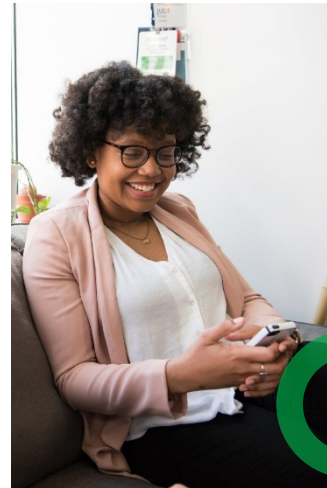




A three-fold requirement



To obey the current social and tax regulations, while providing optimal health and social benefits



To provide a simple set of rules, applicable to both nationals and TCN (third country nationals)



To deliver quality when managing salaries, personal healthcare, medical repatriation, social benefits & retirement savings plans.



PERSONNEL MANAGEMENT

sage

by freelance.com



First, an agreement is signed for **outsourcing employment Contracts management**, between your Company and SAGE SA, according your expatriation strategy.



An **assignment contract is signed**, between SAGE SA and each expert **during secondment for your Company**. Short or long term assignments.



During the expert's assignment, **SAGE SA deals with salaries, allowances, bonuses and social contributions. Invoicing breakdown** (HQ or foreign subsidiary)



AVANTAGES OF THE CONCEPT



Social costs savings
(Senior & TCN) with
flexible recruitment for
short and long term
assignments



SAGE SA provides customised
services to suit your Company
policy and requirements



High level International
health plan, D&D ins.
Unemployment and
pension plan « à la carte »
upon experts demand



Home country Social
Security contributions
can be retained or
International Private
Pension plan



EXPERT

sage

by freelance.com

REGISTERED ADDRESS SERVICE



Useful when dealing with 50 or more expatriates As your representative, SAGE SA can **create, domicile and manage on behalf of your company** a swiss dedicated registered subsidiary or Hub and deal with personnel-related matters for international staff, in all the countries.

Possibility of international contracts management and \or local contracts in the host country.
Implementation of the computing interfaces for communication - monthly reporting by charged entity. Coverage of the legal and accounting obligations in Switzerland under international status and in the host country.



EXPERT

MAIN CLIENTS REFERENCES

sage

by freelance.com





Bernard Rozinthe
General Manager



bernard.rozinthe@sagesa.com



+33 630 700 448



[Lien du profil](#)



sage

by freelance.com

Thanks ! ●

